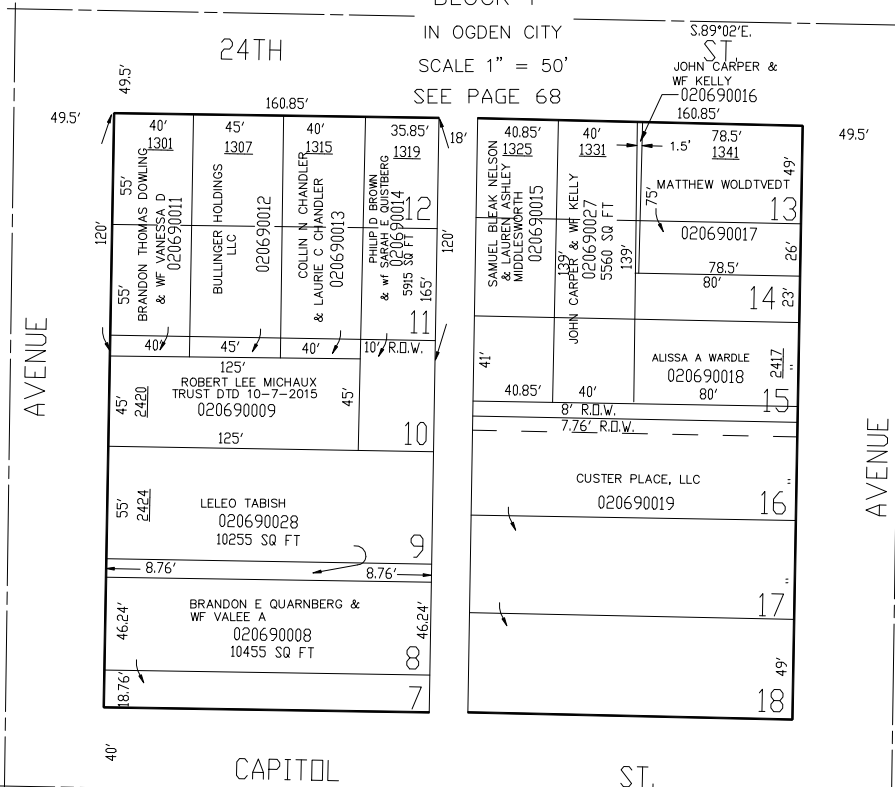


BLOCK 70, PLAT C
ROBINSON'S SUBDIVISION

BLOCK 1

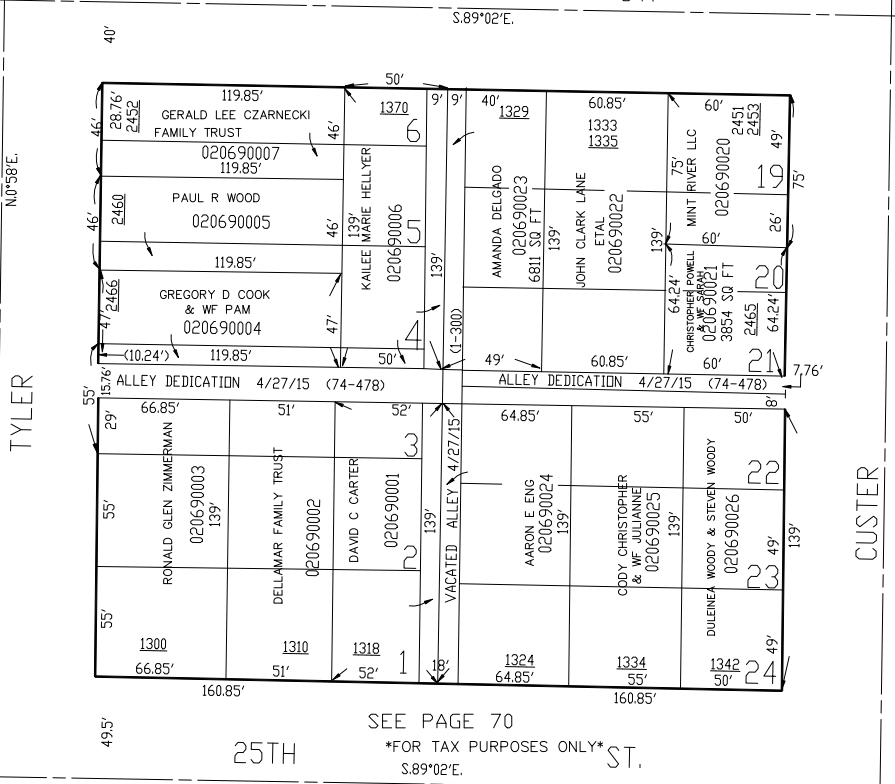
TAXING UNIT: 25

IN OGDEN CITY
SCALE 1" = 50'
SEE PAGE 68



SEE PAGE 26

SEE BOOK 13, PAGE 91



SEE PAGE 70
FOR TAX PURPOSES ONLY
S.89°02'E.

FOR COMPLETE ENG DATA SEE ORIGINAL DEDICATION PLAT IN BOOK 5, PAGE 22 OF RECORDS.